



# WAY KEY



LIMITED PARTNERSHIP

AUGUST 2024

**Community  
Update**

# WAY KEY LP

## AT A GLANCE

**35%**

of Way Key LP's  
workforce is  
Indigenous

**\$1.56M**

in wages dispersed to  
Indigenous employees

**32**

Indigenous  
employees hired to  
date

## WHO WE ARE

Way Key LP provides general timber harvesting, civil and earthworks, and aggregate/quarry services to the We Wai Kai region while also self-performing volume on We Wai Kai timber licenses. Way Key LP is a jointly owned company between We Wai Kai First Nation and the ROGA Group.

## OUR PEOPLE

As of August 2024, 35% of Way Key LP's workforce is comprised of Indigenous employees, with \$1.56 million in wages being disbursed to 32 Indigenous employees to date. Placing Indigenous workforce empowerment at the forefront, employees are offered numerous training opportunities to increase upward mobility and employability within the wider industry workforce.

## MEANINGFUL PARTNERSHIPS

With the cultural values of Indigenous community development as its foundation, Way Key LP places significant value in relationship building as the company continues to grow through various partnerships and clientele. Current clients include Ketz Pacific Contracting Ltd., Western Forest Products (WFP), Mosaic Forest Management, Aecon-EBC, and BC Hydro.

## EQUIPMENT

Way Key LP now owns an extensive supply of equipment, including crushing and screening equipment, multiple excavators, trucks for logging and hauling aggregates, and several pieces of logging equipment. Way Key LP is building up equity for the benefit of the community. The total net book value of equipment in Way Key LP and Way Key Sand & Gravel is \$11 million.

# Project Highlights

CELEBRATING OUR SUCCESS

## **KETZA PACIFIC PROJECT FOR THE NEW WE WAI KAI ADMINISTRATION BUILDING**

Way Key LP completed mass excavations and early-stage work for Ketza Pacific Contracting Ltd. as they commence construction of the new We Wai Kai administration building on the Quinsam Reserve. With initial earthworks concluded, Way Key LP will continue to provide support to Ketza Pacific as building construction progresses. With construction beginning in March, the building is anticipated to be completed by 2025, with tenants expected to move in by early 2026.

The new administration building will provide essential office space for the We Wai Kai First Nation and additional commercial office space that will foster economic growth for the We Wai Kai community. Our involvement in this project offered community members opportunities for career advancement, aligning with Way Key LP's continued commitment to community growth.

We are proud to be a part of this important development for We Wai Kai First Nation and we look forward to future progress.

## **CURRENT SITE PROGRESS**



## **RENDITION OF COMPLETED BUILDING**





# Project Highlights

CELEBRATING OUR SUCCESS

## **AECON-EBC GENERAL PARTNERSHIP ON BC HYDRO'S JOHN HART DAM SEISMIC UPGRADES PROJECT**

Way Key LP continues to fulfill its commitments to prime contractor Aecon-EBC under the \$24.3 million contract secured in 2023 to provide 1.3 million tonnes of aggregate and rock for BC Hydro's John Hart Seismic Upgrades Project. With operations focused on supplying rip rap products over the next three years, Way Key LP has consistently met delivery demands with much of the material having been delivered ahead of schedule. This project has largely been treading water for the last six months due to scheduling challenges. However, it is coming back around in a big way as the quarry started producing significantly more monthly volume in mid-July than it has produced to date.

Van-Con Enterprises has been contracted to supplement production output without lessening the number of employment opportunities for community members. Current operations include drilling and blasting as well as the sorting and processing of products. Production in the quarry is scheduled to be completed in 2025. Transportation to the site will continue for several months following production. Way Key Sand & Gravel is beginning additional commercial sales of large volume product orders to local contractors and projects, which will create additional positive economic impacts for the We Wai Kai community. This project continues to create employment and skill training opportunities for community members.

## **QUINSAM SUBDIVISION PROJECTS**

Since May 2024, Way Key LP has been performing clearing and site prep for an expansion of Elders' housing on the Kalous subdivision in Campbell River, B.C.. Currently in phase 3, work is consolidated into haul stripping and disposal with future phases to include work on the main utility lines (sewer, water, power) and building roads. Way Key LP operations are expected to conclude in July 2024.

This project will positively contribute to the well-being of We Wai Kai Nation Elders. Along with work on the new administration building, the expansion will further community development for the We Wai Kai First Nation, fostering growth and sustainability.

## **ROAD BUILDING & MAINTENANCE**

Way Key LP and Way Key Sand & Gravel annually build roads for clients near Campbell River, including on Quadra Island and surrounding areas, with revenue averaging \$6.5 Million a year. With operations currently focused in Brooks Bay and for La-kwa sa muqw Forestry in the White River area, road building supplies consistent employment stability. Work includes drilling and blasting for material, excavations, compacting, and grading among other earthwork activities to generate opportunities for future resource development.

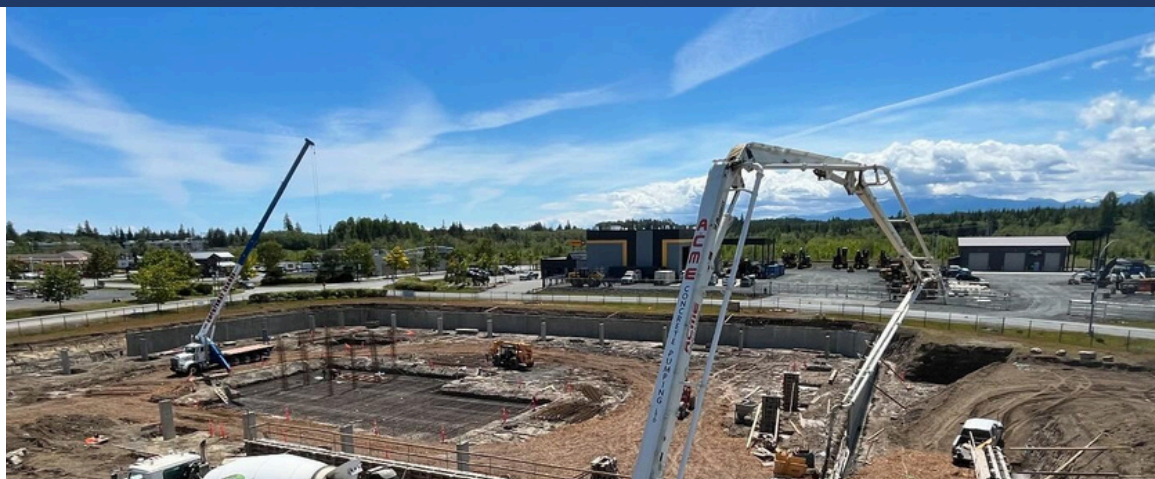
## **FORESTRY**

Way Key LP self-performs logging on Vancouver Island and surrounding areas. Harvesting phases have recently been completed for Mosaic Forest Management on Quadra Island, and Way Key LP has begun initial stages of harvesting for Mosaic in Jackson Bay. The future is bright for Way Key LP forestry operations as We Wai Kai First Nation continues to acquire timber licenses, creating career opportunities and furthering economic growth for We Wai Kai community members.

# Acknowledgements

We extend our deepest gratitude to the We Wai Kai First Nation community, Chief, and Council for their unwavering support and trust in our endeavors. Your guidance and partnership have been instrumental in our success and growth. We also sincerely thank our clients, who have stood by us, valuing our commitment to quality and excellence. Your confidence in our work fuels our drive to deliver outstanding results.

Lastly, a heartfelt thank you to our dedicated employees, whose hard work and commitment are the backbone of our company. Your tireless efforts and skillful execution on every project make all our achievements possible. Together, we continue to build a legacy of success and community development.



---

## Contact

### Field Office

1428 Island Highway  
Campbell River, B.C.  
V9W 8C9

### Head Office

732 Mt. Paul Way  
Kamloops, B.C.  
V2H 1B5

[www.waykey.ca](http://www.waykey.ca)

[www.roga.ca](http://www.roga.ca)

[cheyenne.campbell@roga.ca](mailto:cheyenne.campbell@roga.ca)

250-500-5069